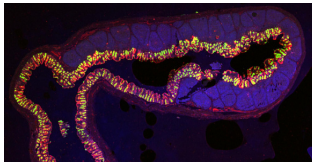
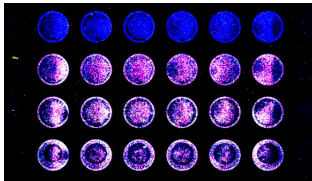
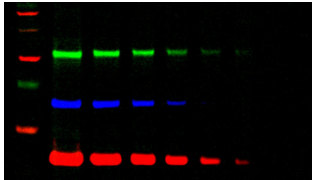


# NEW Odyssey M

## SCC-PCB EMPBAB21

The most sophisticated imager the industry has ever seen



- Create new research opportunities and follow your discoveries— wherever they lead.
- Dozens of assays, including three-color Western blots and cell-based assays
- Up to 18 channels across fluorescent, colorimetric, and luminescent spectrums
- Industry-leading 5-micron resolution to see detailed tissue sections for triaging

Watch for Odyssey M at EMPBAB21:

**In site training** Wednesday 07th February at EMPBAB21. 2 sessions: 10-12 and 15:30 - 17:30 h

**Online session:** Thursday 15th February from 10 to 12 h room EMPBAB21 from 10 - 12 h

*No registration is required. More info* [scc-pcb@pcb.ub.cat](mailto:scc-pcb@pcb.ub.cat) and [antonio.peteira@licor.com](mailto:antonio.peteira@licor.com)



**LI-COR**



Parc Científic de Barcelona  
UNIVERSITAT DE BARCELONA

